

Molded Case Circuit Breakers

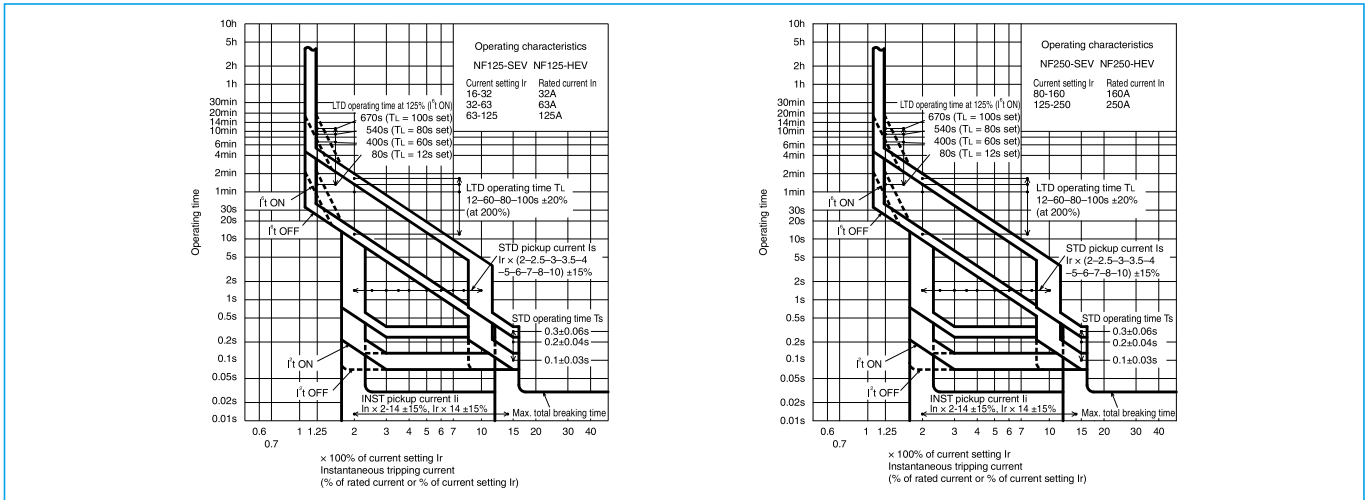
NF125-SEV NF125-HEV NF250-SEV NF250-HEV



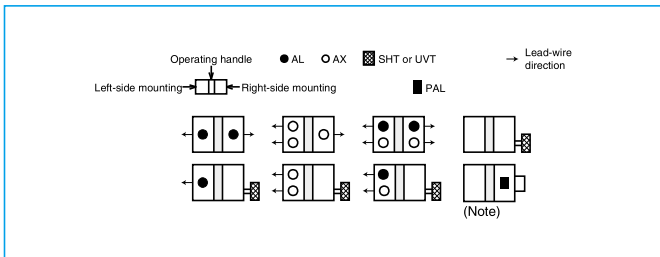
NF125-SEV

Model		NF125-SEV	NF125-HEV	NF250-SEV	NF250-HEV		
Rated current In (A) Reference ambient temperature 40°C		32 63 125	32 63 125	160 250	160 250		
Current setting Ir (A)		Adjustable 16-32 (1.6A step) 32-63 (3.15A step) 63-125 (6.25A step)	Adjustable 16-32 (1.6A step) 32-63 (3.15A step) 63-125 (6.25A step)	Adjustable 80-160 (8A step) 125-250 (12.5A step)	Adjustable 80-160 (8A step) 125-250 (12.5A step)		
Number of poles		3 4	3 4	3 4	3 4		
Rated insulation voltage Ui (V)		690	690	690	690		
Rated short-circuit breaking capacity (kA)	IEC 60947-2 EN 60947-2 (Icu/Ics)	AC	690V	8/8	10/8	8/8	10/8
			500V	30/30	50/38	30/30	50/38
			440V	36/36	65/65	36/36	65/65
			415V	36/36	70/70	36/36	70/70
			400V	36/36	75/75	36/36	75/75
			380V	36/36	75/75	36/36	75/75
			230V	85/85	100/100	85/85	100/100
			200V	85/85	100/100	85/85	100/100
DC		250V	-	-	-	-	
Standard attached parts (front connection)		Terminal screw: M8(Bolt(Hex-socket))x16 (3P: 6pcs, 4P: 8pcs) Mounting screw: M4x0.7x55 (3P: 2pcs, 4P: 4pcs) Insulation barrier: (3P: 4pcs, 4P: 6pcs)					

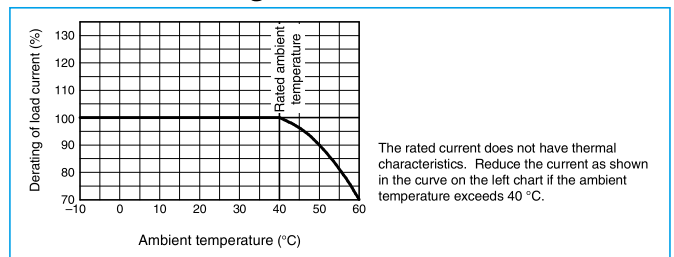
Operating Characteristics



Internal Accessories



Current Reducing Curve



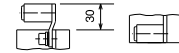
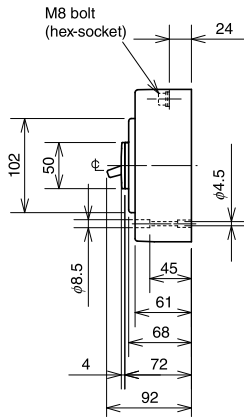
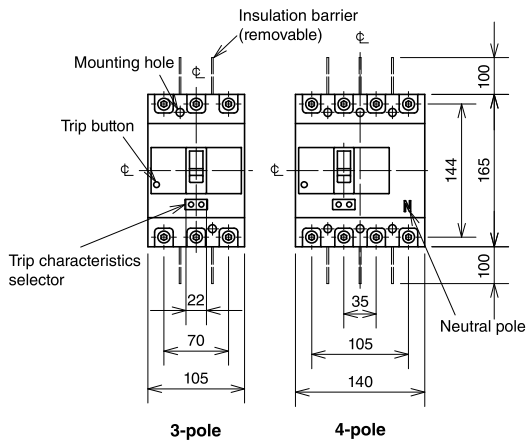
External Accessories

Accessories	Type name	Reference page	Accessories	Type name	Reference page
Operating handle	F	F-2SV	Mechanical interlock	MI	3P MI-05SV3
	V	V-2SV		4P MI-2SV4	136
Lock cover	LC	LC-05SV	Terminal cover (*3)	Small	3P TCS-2SV3
Handle lock device	HL(*1)	HLF-05SV			4P TCS-2SV4
		HLN-05SV		3P TCL-2SV3	
		HLS		HLS-2SV	4P TCL-2SV3L
				4P TCL-2SV4	
				3P TTC-2SV3	
				4P TTC-2SV4	
				3P BTC-2SV3	
			4P BTC-2SV4		
			3P PTC-2SV3		
			4P PTC-2SV4		
Electrical operation device			(*2)		140

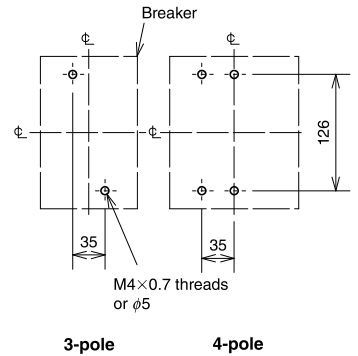
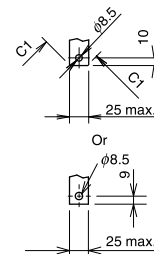
Notes *1 HLF types are used for OFF lock and HLN types for ON lock.
 *2 Specify the working voltage. Refer to the reference page for type name.
 *3 For NF125-HEV and NF250-HEV with PAL, specify the model name with MP at the end.

Outline Drawing

Front connection



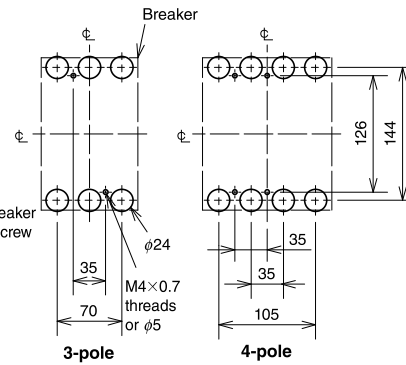
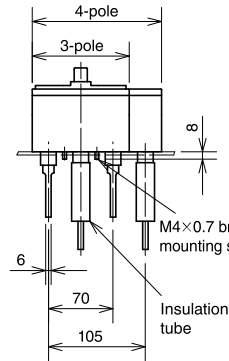
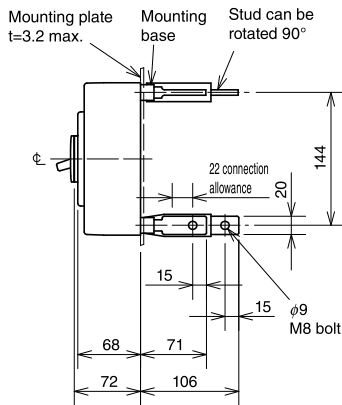
Solderless terminal for wire size
125-175A 14-95mm²
200-250A 70-125mm²
Wire connection



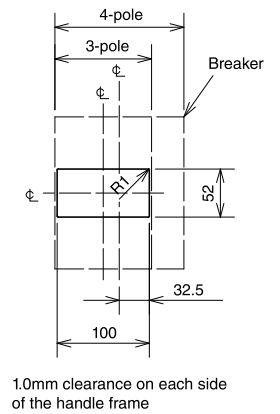
Conductor drilling for direct connection

Drilling (Tapping)

Rear connection

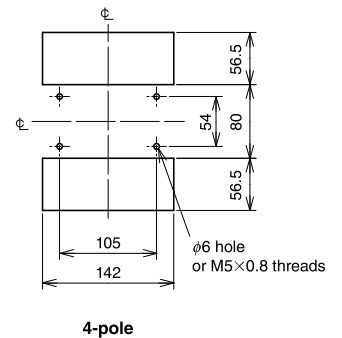
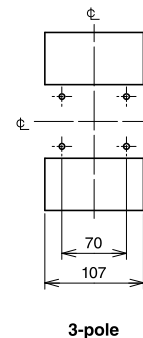
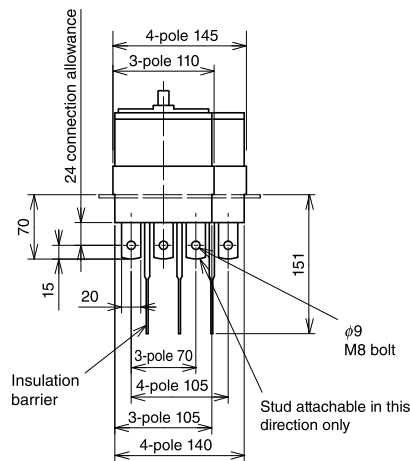
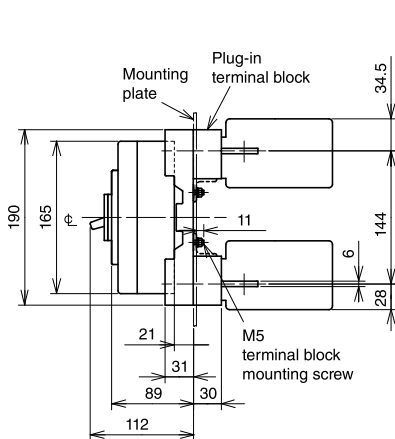


Drilling (Tapping)



Front-panel cutout

Plug-in



Drilling (Tapping)