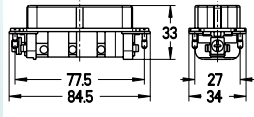
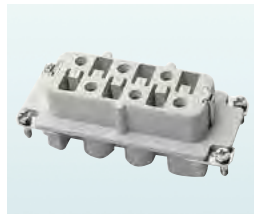


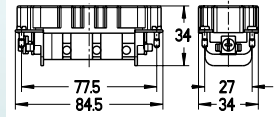
Approvals/Certification mark



Female insert



Male insert



Part no.:

710620

with wire protection
0.5-6 mm² (20-10 AWG)

710621

with wire protection
0.5-6 mm² (20-10 AWG)

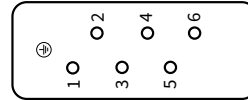
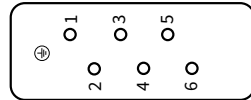
Packaging unit
Weight

10 pcs.
88 g

10 pcs.
86 g

Contact arrangement

View from termination side



Specifications series BA

Regulations: DIN VDE 0627, DIN VDE 0110, DIN EN 61 984

Number of poles: 6 + PE, 12 (2 x6) + PE

Electrical data acc. to DIN EN 61984: 35 A 400/690V 6 kV 3
 Rated current _____
 Rated voltage conductor - earth _____
 Rated voltage conductor - conductor _____
 Rated surge _____
 Pollution degree _____
 or 35 A 500V 6kV 3

Rated voltage acc. to UL/CSA: 600 V

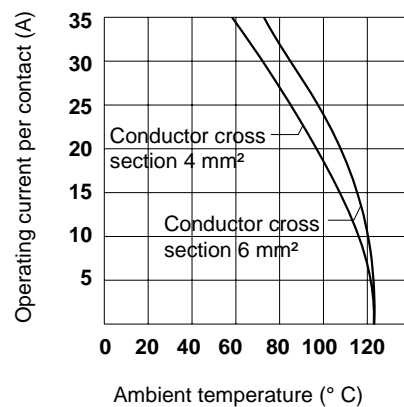
Material: Glassfiber reinforced polyamide
 Temperature range: - 40 °C up to + 125 °C
 Flame class rating acc. to UL 94: V 0
 Mechanical operating life: ≥ 500 mating cycles

Contacts

Material: Copper alloy
 Surface - hard silver-plated: 3 μm Ag
 Contact resistance: ≤ 0.5 m Ω

Screw terminal with wire protection: 6 mm² (20-10 AWG)
 Torque/testing torque: 1.2 Nm

Wire stripping length: 10 mm



The derating diagram (corrected current capacity curve) acc. to DIN IEC 60 512 applies to such current which can – depending on ambient temperature and conductor cross section – circulate through each contact without exceeding the upper limiting temperature.